

Leicester City Diplomas

The Advanced Diploma in Society Health and Development



Brief Course description

The Diploma in Society, Health and Development is about working in health, social care, community justice and children and young peoples services. You will investigate and learn about the skills, qualities, values organisational systems needed to work in these sectors, while developing your awareness of career opportunities within them.

The course is also designed to enhance your personal and professional development with regard to functional English, Maths and ICT skills. Through applied learning, you will develop skills that you can use in these sectors.

You should consider this course if you would like:

- An alternative to an A level programme.
- A course with a practical and theoretical applications.
- A broad understanding of the health, social, children & young people and community justice sectors.
- A clear opportunity for progression into higher education.
- An opportunity to work directly with employers and clients.

To gain more work experience in the health, social, children & young people and community justice fields.

The Advanced Diploma in Society, Health & Development is equivalent to 3.5 GCE A levels. The Progression Diploma in Society, Health & Development is equivalent to 2.5 GCE A levels.

What will I learn?

The qualification is made up of several components:

The Principal Learning – this is the subject specific part of the qualification where you will learn about the four sectors in detail.

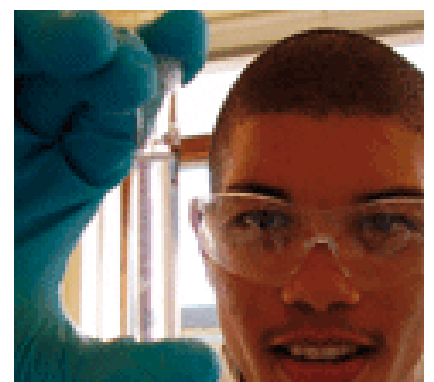
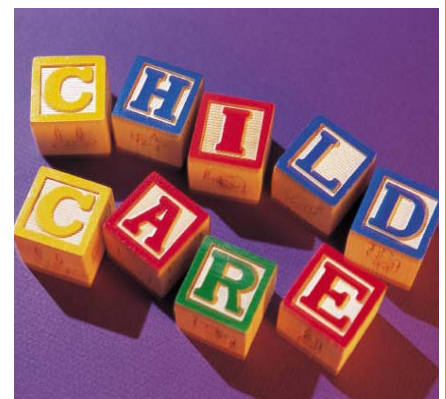
The following unit titles make up the principal learning component of the qualification:

- The sectors in context.
- Principles and values in practice.
- Partnership working.
- Communication and information sharing.
- Personal and professional development in the work environment.

Safeguarding and protecting individuals and society.

The Generic Learning – this includes the development of functional skills such as English, Maths and ICT. Also you will complete an extended project where you will carry out your own investigation in an area that really interests you.

The Additional Specialist Learning – this allows you to broaden or deepen your knowledge, you may include an additional A level subject. For the Progression Diploma, you will not be required to take this component.



Where will I learn?

You will study the diploma at Regent College and Gateway College, this way you will be able to use the best facilities and staff expertise at both campuses. You will complete at least 20 days work experience alongside various visits and workshops from employers and professionals.

How will I be taught?

The Society, Health & Development diploma is designed to be delivered in an applied way. This means that all of your learning will be based around case studies and relating to real life. The remaining two units are externally assessed using tests.

What can I do after this course?

This diploma qualification has been developed with consultation and guidance from employers and universities, therefore there will be a wide range of options open to you on completing the Society, Health and Development Advanced Diploma. You may choose to continue into Higher education, where you will be able to follow onto diploma or degree courses relating to social, health, children & young people or community justice.

Due to your work based experience, you may alternatively choose to go straight into employment in any one of these areas.

What is this course “worth”?

The Advanced Diploma in Society, Health & Development is equivalent to 3.5 GCE A levels.

Entry Requirements/Skills needed.

To be successful on this course, you are required to have GCSE's, or equivalent in 5 subjects at grade C or above, including English language, or the equivalent e.g. a Higher level diploma in Society, Health & Development.

You will also need to have a keen interest in Society, Health & Development areas and be considering a future in a related field.

Employer Links?

You will be completing at least 10 days work experience in a relevant setting of your choice. You will also be learning through the involvement of many local professionals due to the links with sector skills councils such as skills for health, skills for care and magistrate in the community.