

Leicester City Diplomas

The Higher Diploma in Society, Health and Development

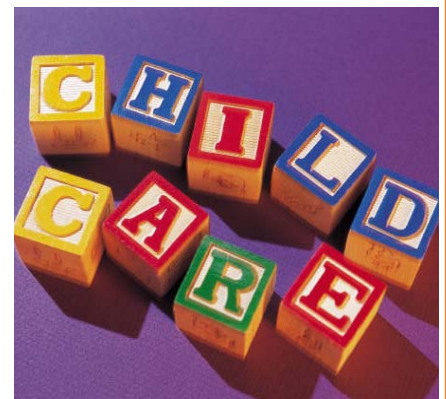


Brief Course description

The Society, Health and Development Level 2 Diploma introduces key themes related to working in Health, Social Care, Early Years and Community Justice based services. You will learn what these services are all about and discover the different opportunities they have to offer. As well as understanding the theory behind working with clients in these settings, you will learn practical skills and develop an ability to solve problems and work as part of a team. The course will open up a wide range of educational, training and career opportunities. You will also develop your English, Maths and ICT skills to a high standard.

You should consider this course if you would like:

- An alternative to GCSEs
- To work with people
- A qualification containing a variety of units
- A course with practical opportunities
- A broad basic understanding of Health, Social Care, Early Years and Community Justice
- Progression routes to Level 3 courses.
- A course where you will work with employers
- A course with good employment prospects
- Opportunities for work experience
- Opportunities for trips and visiting speakers related to your course
- To combine a vocational course with other courses

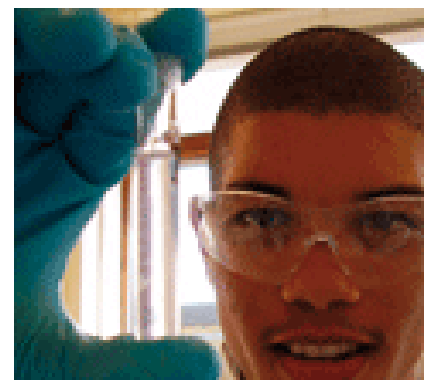


The Foundation Diploma (Level 1) in Society, Health and Development is equivalent to 5 GCSEs.

What will I learn?

You will study and experience the following Principal Learning topics:

- Principles, Values and Personal Development
- Working together and Communicating
- Safeguarding and Protecting Individuals
- Growth, Development and Health Living
- Needs and Preferences
- Anti-Social and Offending Behaviour
- Supporting Children and Young People
- Patient-centered Health
- The Social Model of Disability



Generic Learning:

Here you will develop your skills in English, Maths and ICT (Functional skills). You will also develop your personal learning and thinking skills (PLTS) and complete a project which demonstrates your skills and knowledge of the subject, for example, investigating different job roles in Society, Health, Early Years and Community Justice through visits to employers, and working as part of a team in a realistic working environment. You will also be given the opportunity to study additional, specialist subjects to further extend the scope of your programme for other qualifications.

Where will I learn?

You will study both at school and at College. You will also take part in visits to Health, Social Care, Early Years and Community Justice settings. You will be required to take part in a minimum of 10 days of work experience a Health, Social Care, Early Years, Community Justice based employer, where you will gain valuable additional skills and knowledge, including developing interpersonal skills.

How will I be taught?

You will have opportunities to experience different styles of learning in different environments and with an emphasis on work- related learning. Employers will set challenge projects and exercises that you will be able to complete individually or by working in a team.

How will I be assessed?

Most units will be assessed by your teachers and will be based on your practical, assignment and project work. Employers will also help to assess your work, particularly if they have set a project for you to complete.

There will be one or 2 units where you will need to take an external test but the emphasis for the whole course is about continuous assessment by your teachers.

What can I do after this course?

The Higher level diploma is designed to broaden your horizons and give you a wide range of next step options. You may wish to take an Advanced Diploma or other Level 3 courses in Society, Health and Development or a related areas. Alternatively, you may wish to seek employment. The Society Health and Development Diploma has been carefully designed to give you relevant transferable skills that will be welcomed by colleges, universities and employers.

What is this course “worth”?

The Higher Diploma is equivalent to 7 GCSEs.

Entry requirements/skills needed

It is very important that you have:

- a strong interest in Health, Social Care, Early Years or Community Justice Services,
- a good attendance and punctuality record,
- a good behaviour record
- good literacy and numeracy skills.

You will need to discuss with your teacher, which level of Diploma will be most appropriate for you. You will need to show that you have the potential to achieve at level 2, including functional Maths, English and ICT.

Employer links?

You will have the opportunity to visit, and/or attend work placements at local employer from a range including:

- Health Care Services eg. A visit to a BUPA Hospital
- Social Care e.g. a residential homes,
- Early Years e.g. nurseries
- Community Justice, visits to Magistrates/Youth Courts